

LAMVIN[®]

PRINTED ART INFORMATION



ACCEPTABLE FILE TYPES:

1. Adobe Illustrator (.ai)
2. Vector File (.eps)
3. Picture File (.jpeg)

Minimum requirements: 300dpi at full size



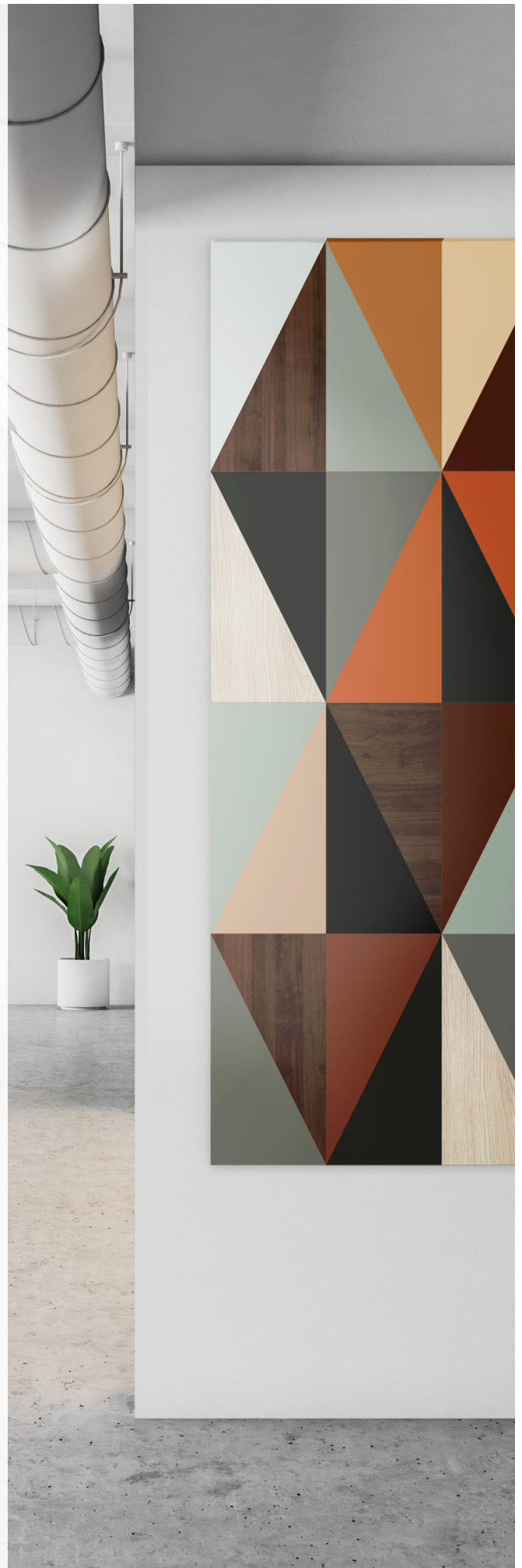
NOTES:

1. Do not add bleed – Lamvin will mirror bleed the sides.
2. Name of image must correspond to panel dimension or panel Tag.
3. Provide panel layout with panel ID (if needed)



PANEL/IMAGE STYLE

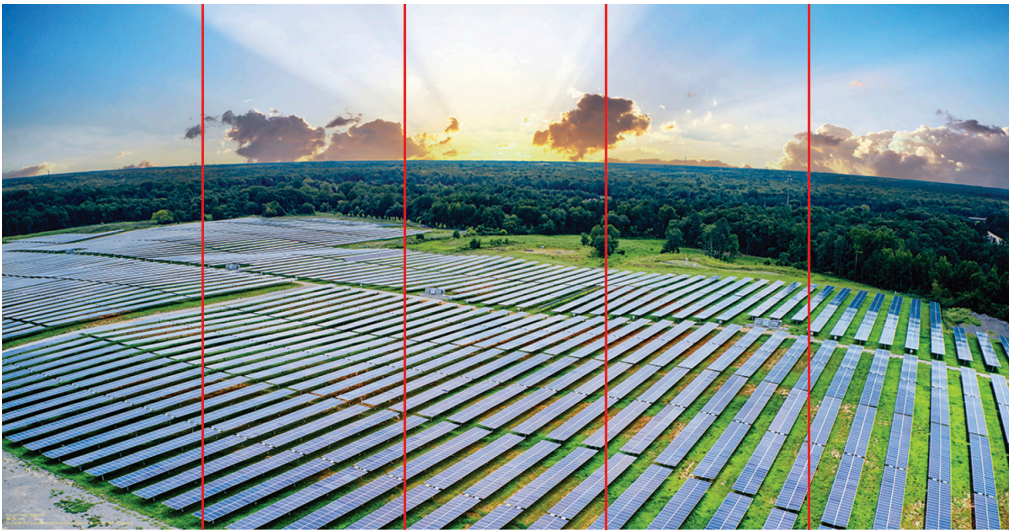
1. Single image – One image per panel
2. Panel Matching – No GAP (one image spread over multiple panels)
3. Panel Matching – with GAP (specify gap width, image will be cut and restarted)



EXAMPLES



Single Image
(showing mirror bleed)



Panel Matching (No Gap)



Panel Matching (With Gap)

LAMVIN®

www.lamvin.com |     