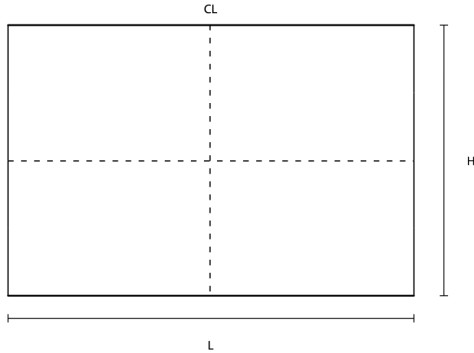
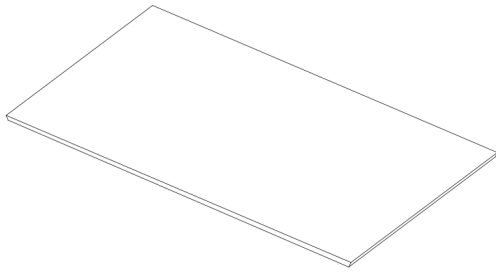


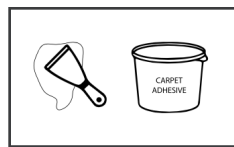
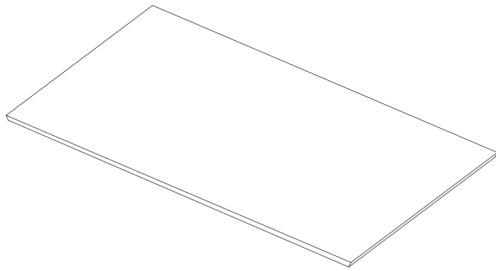
1. Measure the length and height of the wall. Find center of the wall.



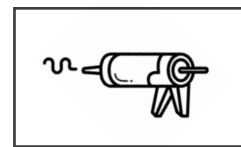
2. Lay down the Subway panels on the ground and flip the chamfered edge down.



3. Use the putty knife to place the carpet adhesive to one Subway at a time. Working on one Subway at a time, apply a liberal amount of adhesive to the back of the panel utilizing the adhesive manufacturers best practices.

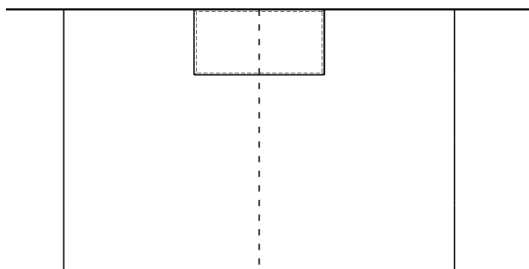


OR

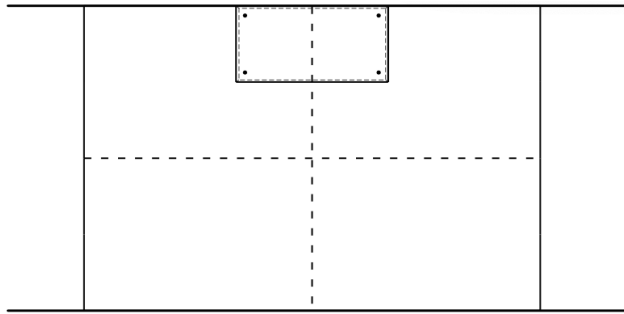
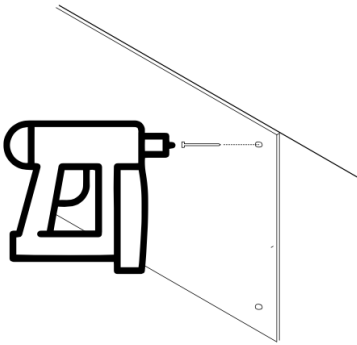


\*Robert 3096 Carpet Adhesive or Liquid Nails (heavy duty)

4. Position the Subway on the wall.

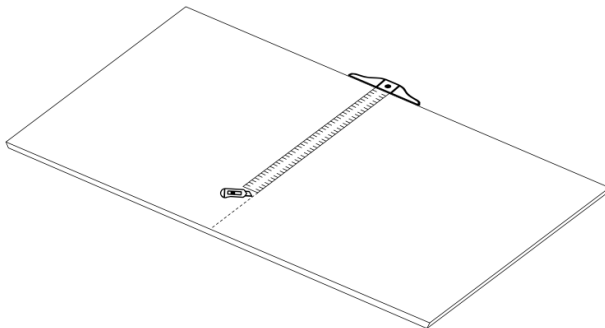
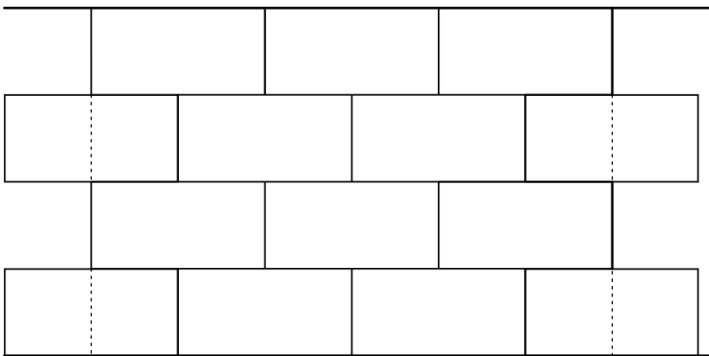


5. Use nail gun to put finishing nails on the four corners to hold the Subway until the adhesive is dry.

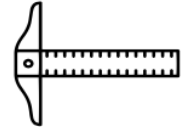
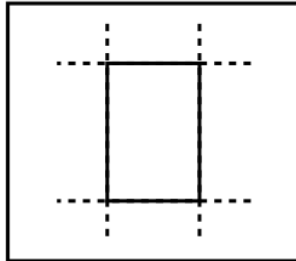
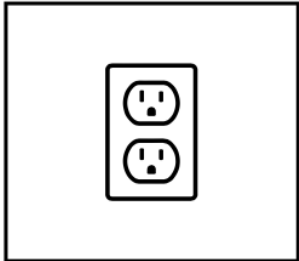


6. Use a box cutter and metal ruler to make cuts to fit the wall.

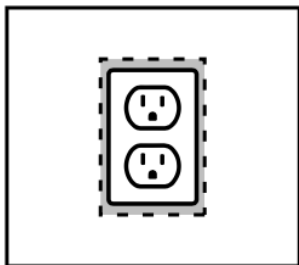
Tip for clean edges: Use smooth continued motion to cut through half the thickness of the material; using the edge of the ruler as your guide. Go over the same line again to complete the cut.



6A. Follow instructions in step #6 for cuts around outlets, etc.



Tip: Matching paint color can be used on the wall around outlets or anywhere where Subway panels are not fitting snugly to each other. This can happen when doing complex cuts or when your wall has imperfections or is not at a perfect 90 degree angle. This small trick will stop any white wall peeking through.



7. Once adhesive has dried, use pliers to remove the fine nails.



8. Subway wall is complete.

