

A modern restaurant interior featuring long wooden tables and blue upholstered chairs. Large windows offer a view of a city skyline. The ceiling has exposed concrete and metal beams, with several large, circular, metallic pendant lights hanging over the tables. A bar area with a green brick wall and various bottles is visible in the background. The floor is made of hexagonal tiles.

HUSHTONE™

LAMVIN™

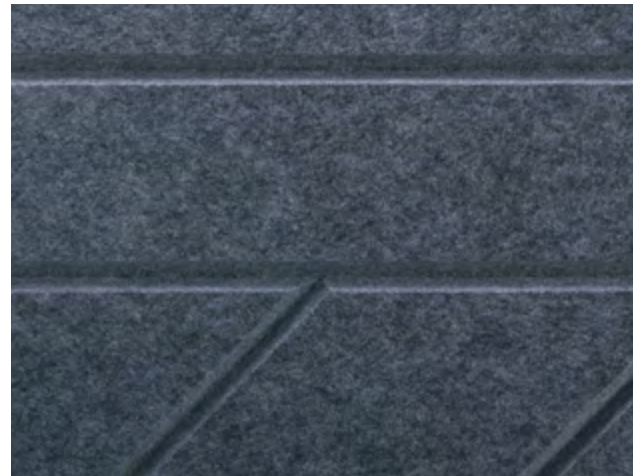
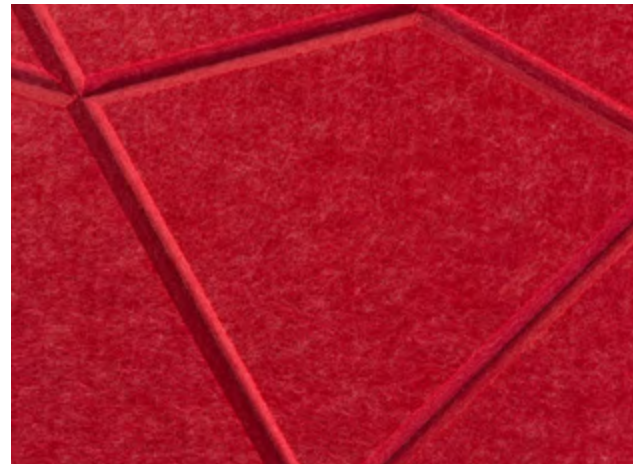


- CEILINGS
- LIGHTING
- DIVIDERS
- WALLS
- COLORS & PATTERNS
- ACOUSTICAL DATA

HUSHTONE™

PET POLYESTER ACOUSTICAL PRODUCTS

Lamvin Is Reinventing Acoustical Design. Our revolutionary Hushtone acoustical products line is a designer's dream. No stone was left unturned while curating this beautiful assortment of products. Our Hushtone line is made with the highest quality design friendly felt, for the ultimate in aesthetics and acoustical benefit.



HUSHTONE™ PANEL

SPECIFICATIONS

Panel Sizes: 48" w x 96" h*

Thickness: 9mm, 12mm

Weight Per Square Foot:

9mm /.27 lb. - 12mm /.44 lb.

FIRE RATING

Class A per ASTM E-84, based on 9mm white

COMPOSITION

- 100% Polyethylene Terephthalate (PET)
- 55% recycled content

ENVIRONMENTAL FACTORS

- 100% recyclable
- Low VOC Emissions
 - ASTM - D5116
 - LEED - MRc4

HUSH BEAM™



SPECIFICATIONS

Product Weight: 1.5 lbs/SF

Length: 4', 8'

Width: 2.75"

Height: 12", 16", 24"



FIRE RATING

Class A per ASTM E-84



COMPOSITION

- 100% Polyethylene Terephthalate (PET)
- 55% recycled content



ENVIRONMENTAL FACTORS

- 100% recyclable
- Low VOC Emissions
- ASTM - D5116





INSTALLATION OPTIONS

Product can be installed with your choice of either aircraft cable or threaded rod attachments.



INSTALLATION OPTIONS

Product can be installed with your choice of either aircraft cable or threaded rod attachments.



ZEPPELIN™

SPECIFICATIONS



Standard Cloud Sizes: 47" Diameter Circle or 47" x 47" Square

Product Weight: 15 lbs/Cloud *weight without light

Thickness: 2.75"

FIRE RATING



Class A per ASTM E-84

COMPOSITION



- 100% Polyethylene Terephthalate (PET)
- 55% recycled content

ENVIRONMENTAL FACTORS



- 100% recyclable
- Low VOC Emissions
 - ASTM - D5116
 - LEED - MRc4

HUSH BRIGHT BEAM™



SPECIFICATIONS

Product Weight: 1.5 lbs/SF

Length: 4', 8'

Width: 2.75"

Height: 12", 16", 24"



FIRE RATING

Class A per ASTM E-84



LIGHTING SPECIFICATIONS

Light Wattage: 56W

Color Temperature: 3000K

LED Dimmability: 0-10V Lumen: 8800

Voltage: 120-277V



COMPOSITION

- 100% Polyethylene Terephthalate (PET)
- 55% recycled content



ENVIRONMENTAL FACTORS

- 100% recyclable
- Low VOC Emissions
- ASTM - D5116





INSTALLATION OPTIONS

Product can be installed with your choice of either aircraft cable or threaded rod attachments.

LIGHTING HARDWARE

Cable kit with:

(2) 6' aircraft cable, (1) 5 wires clear power feed,
(2) white/black/silver canopy



LIGHTING HARDWARE

Cable kit with:

- (2) 6' aircraft cable, (1) 5 wires clear power feed,
- (2) white/black/silver canopy

INSTALLATION OPTIONS

Product can be installed with your choice of either aircraft cable or threaded rod attachments.



ZEPPELIN™ BRIGHT

SPECIFICATIONS



Standard Cloud Sizes: 47" Diameter Circle or 47" x 47" Square

Product Weight: 15 lbs/Cloud *weight without light

Thickness: 2.75"

FIRE RATING



Class A per ASTM E-84

LIGHTING SPECIFICATIONS



Light Wattage: 56W

Color Temperature: 3000K

LED Dimmability: 0-10V

Lumen: 8800

Voltage: 120-277V

COMPOSITION



- 100% Polyethylene Terephthalate (PET)
- 55% recycled content

ENVIRONMENTAL FACTORS



- 100% recyclable
- Low VOC Emissions
 - ASTM - D5116
 - LEED - MRc4

HUSH DIVIDER™



SPECIFICATIONS

Standard Screen Sizes: 47"x 38", 47"x 56-1/2",
47"x 75", 47"x 94"

(with Stationary Feet)

Standard Screen Sizes: 47"x 40.75", 47"x 59.5",
47"x 77.75"

(with Castors)

Thickness: 2.75"

Weight: 47"x 75" - 36 lbs/with frame



FIRE RATING

Class A per ASTM E-84



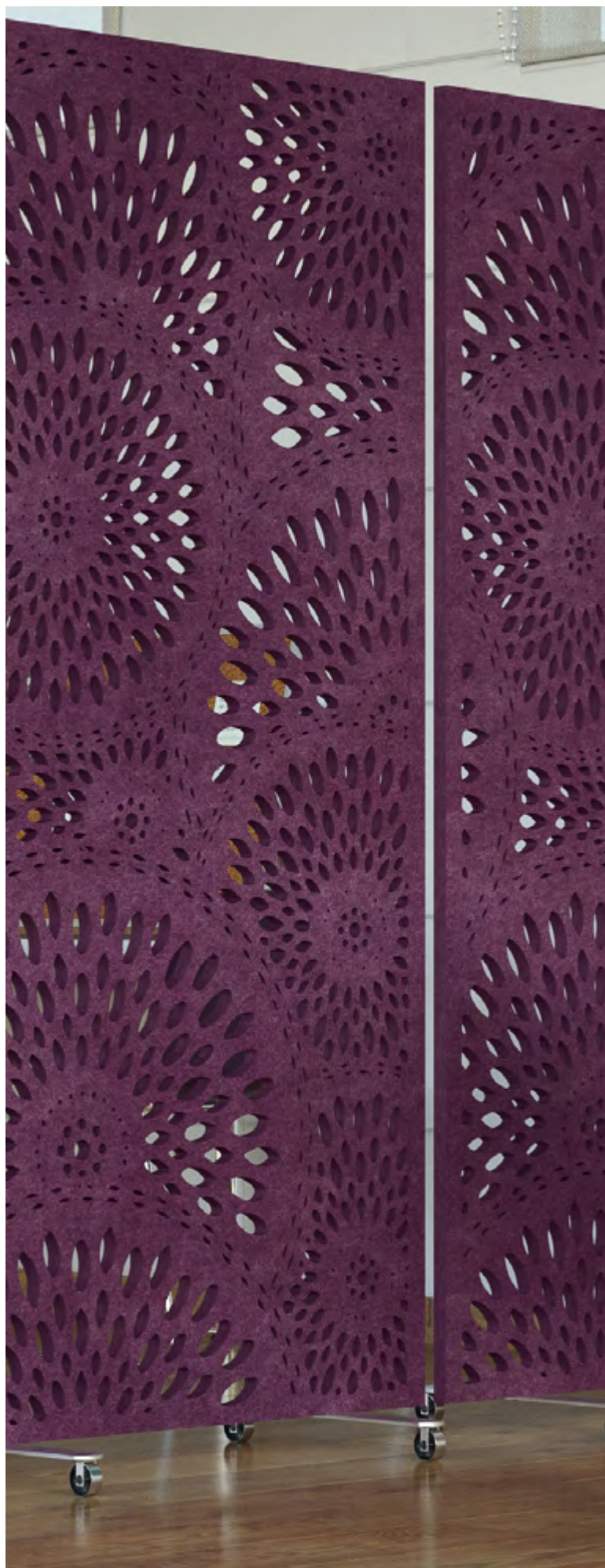
COMPOSITION

- 100% Polyethylene Terephthalate (PET)
- 55% recycled content



ENVIRONMENTAL FACTORS

- 100% recyclable
- Low VOC Emissions
- ASTM - D5116
- LEED - MRc4





HUSH ART SCREENS™

SPECIFICATIONS



Standard Panel Size: 47" w x 95" h

Thickness: 9mm

Weight: 10 lbs/Panel

HARDWARE INCLUDED



Product comes with strips top and bottom
and embedded hardware.

FIRE RATING



Class A per ASTM E-84

COMPOSITION



- 100% Polyethylene Terephthalate (PET)
- 55% recycled content

ENVIRONMENTAL FACTORS



- 100% recyclable
- Low VOC Emissions
- ASTM - D5116
- LEED - MRc4

HUSH HEX™



SPECIFICATIONS

Standard Panel Size: 15" w x 13" h

Thickness: .625"

Weight: 1 lb./Tile



FIRE RATING

Class A per ASTM E-84



COMPOSITION

- 100% Polyethylene Terephthalate (PET)
- 55% recycled content



ENVIRONMENTAL FACTORS

- 100% recyclable
- Low VOC Emissions
- ASTM - D5116
- LEED - MRc4





INSTALL METHODS:

Construction Panel Adhesive, Carpet Glue or Nail Clips with Adhesive



INSTALL METHODS:

Construction Panel Adhesive, Carpet Glue or Nail Clips with Adhesive



SUBWAY™

SPECIFICATIONS



Panel Sizes: 23.5" w x 23.5" h or 47" w x 23.5" h

Thickness: 9mm

Edge Detail: Chamfered

Weight: .25 lbs/SF

FIRE RATING



Class A per ASTM E-84

COMPOSITION



- 100% Polyethylene Terephthalate (PET)
- 55% recycled content

ENVIRONMENTAL FACTORS



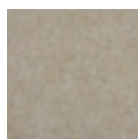
- 100% recyclable
- Low VOC Emissions
 - ASTM - D5116
 - LEED - MRc4

COLORS

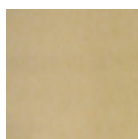
9mm FINISHES



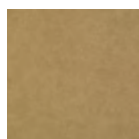
07
White



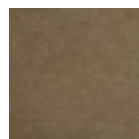
44
Ivory



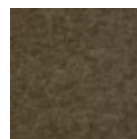
42
Cream



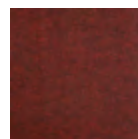
52
Latte



02
Taupe



35
Speckled Earth



43
Lava



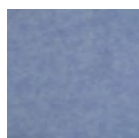
21
Indigo Blue



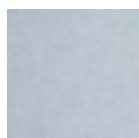
19
Denim



56
Azure



30
Blue



18
Arctic Ice



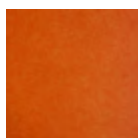
51
Sunkist Orange



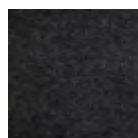
22
Yellow



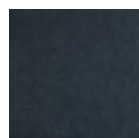
45
Big Red



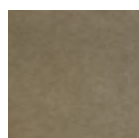
55
Tangerine



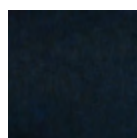
17
Dark Gray



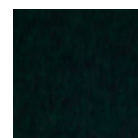
11
Steel



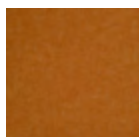
53
Smoke Beige



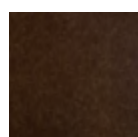
09
Deep Blue



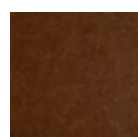
47
Emerald



41
Marigold



54
Espresso



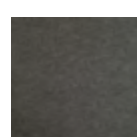
49
Brunette



48
Avocado



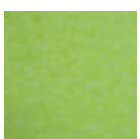
08
Eggplant



34
Pure Gray



50
Caramel



39
Green Apple



06
City Brown



03
Light Gray



36
Berry Red



10
True Black

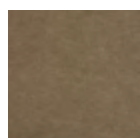


05
Dark Green



12
Moss

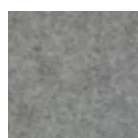
12mm FINISHES



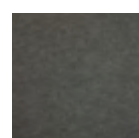
02
Taupe



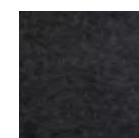
06
City Brown



03
Light Gray

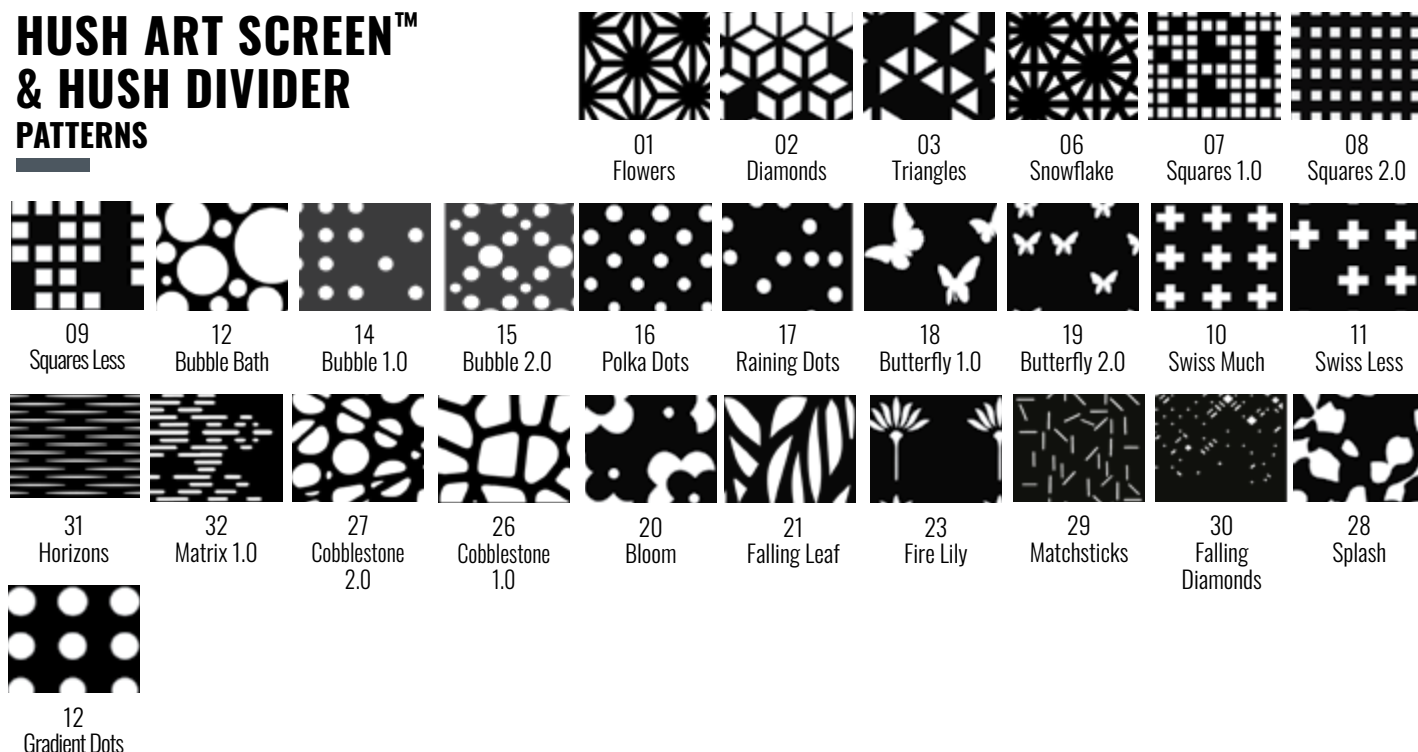


34
Pure Gray



17
Dark Gray

HUSH ART SCREEN™ & HUSH DIVIDER PATTERNS



ACOUSTICAL DATA

HUSHTONE™ PANEL

Frequency (Hz)	125	250	500	1000	2000	4000	NRC
9mm Thickness	.04	.04	.16	.40	.63	.82	.30
9mm w/ 2" Air Gap	.07	.13	.42	.79	.89	.76	.55
9mm w/ 4" Air Gap	.14	.32	.73	.92	.72	.88	.65
18mm Thickness	.05	.12	.39	.74	.95	1.04	.55

* Board Size 48" x 95-1/4" #30 Blue, #41 Marigold, #35 Speckled Earth & #34 Pure Gray
 ** 9mm is tested as Type "A" Mounting, 9mm w/ 2" gap is tested as Type "F-50" Mounting,
 9mm w/ 4" gap is tested as Type "F-100" Mounting, 18mm is tested as Type "A" Mounting

HUSH BEAM™

Frequency (Hz)	125	250	500	1000	2000	4000	NRC
2.75" Thickness	.53	.74	1.06	1.54	1.77	1.94	1.30

Frequency (Hz)	125	250	500	1000	2000	4000	SABINS
2.75" Thickness	2.94	4.45	7.05	10.62	12.61	13.64	

Based on Baffle size 4' x 2' with Type "J" Mounting. Sabins are based on Sabins per Object, NRC is an equivalent number based on one face of one panel

ZEPELIN™

Frequency (Hz)	125	250	500	1000	2000	4000	NRC
2.75" Thickness	.53	.74	1.06	1.54	1.77	1.94	1.30

Based on Cloud size 4' x 4' with Type "J" Mounting.
 NRC is an equivalent number based on one face of one panel.

ZEPELIN™ BRIGHT

Frequency (Hz)	125	250	500	1000	2000	4000	NRC
2.75" Thickness	.53	.74	1.06	1.54	1.77	1.94	1.30

Based on Cloud size 4' x 4' with Type "J" Mounting.
 NRC is an equivalent number based on one face of one panel.

HUSH BRIGHT BEAM™

Frequency (Hz)	125	250	500	1000	2000	4000	NRC
2.75" Thickness	.53	.74	1.06	1.54	1.77	1.94	1.30

Frequency (Hz)	125	250	500	1000	2000	4000	SABINS
2.75" Thickness	2.94	4.45	7.05	10.62	12.61	13.64	

Based on Baffle size 4' x 2' with Type "J" Mounting. Sabins are based on Sabins per Object, NRC is an equivalent number based on one face of one panel

HUSH ART SCREENS™

Frequency (Hz)	125	250	500	1000	2000	4000	NRC
9mm Thickness	.29	.35	.54	.85	1.22	1.44	.75

Tested as a Type "J" Mounting. Based on panel size 4'x1'. NRC is an equivalent number based on one face of one panel. Based on solid panels with no patterns.

HUSH DIVIDER™

Frequency (Hz)	125	250	500	1000	2000	4000	NRC
2.75" Thickness	.29	.40	.54	.73	.87	.90	.65

Tested as Type "K" Mounting. Based on solid panels with no patterns.

HUSH HEX™

Frequency (Hz)	125	250	500	1000	2000	4000	NRC
.75" Thickness	.03	.07	.29	.60	.76	.86	.45

Tested as Type "A" Mounting

SUBWAY™

Frequency (Hz)	125	250	500	1000	2000	4000	NRC
9mm Thickness	.04	.04	.16	.40	.63	.82	.30

Tested as Type "A" Mounting



LAMVIN™

www.lamvin.com

