

A modern interior space, likely a yoga studio or a lounge, featuring acoustic panels. The room has a light-colored wooden floor, a brick wall on the left, and a large window in the background. In the foreground, several brown yoga mats are laid out on the floor, each with a grey rolled-up mat and a black water bottle. In the background, there is a raised platform with more mats and water bottles. A black metal shelving unit holds several rolls of acoustic panels. The text "EQUALLY ARTFUL & EFFECTIVE SONIC PANELS" is overlaid in the center of the image.

EQUALLY ARTFUL & EFFECTIVE

SONIC PANELS

LAMVIN





SONIC PANELS

ACOUSTIC WALL AND CEILING TREATMENTS

Our line of wall and ceiling panels is highly versatile and likewise beautiful. With an array of sizes and finishes, you're sure to find one (or more!) To solve your reverberant noise problem. Tap into your creativity to create a sensory marvel and pair it with carefully curated installation hardware to bring your creation to life.



lamvin.com/sonic

SONIC SOUND BLOCK™ PANEL





ULTRA PLUS HIGH-IMPACT

SEA VIEW MIDDLE SCHOOL



ULTRA HIGH-IMPACT



TACKABLE HIGH-IMPACT



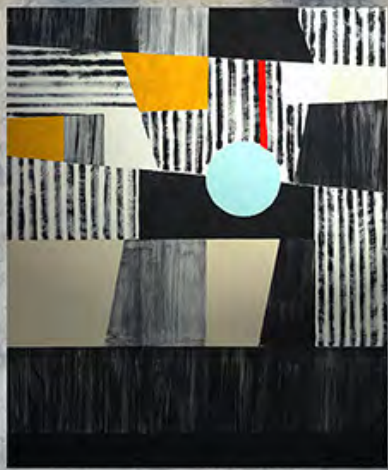
REFLECTIVE



**ECO-SONIC® TACKABLE
HIGH-IMPACT PANEL**



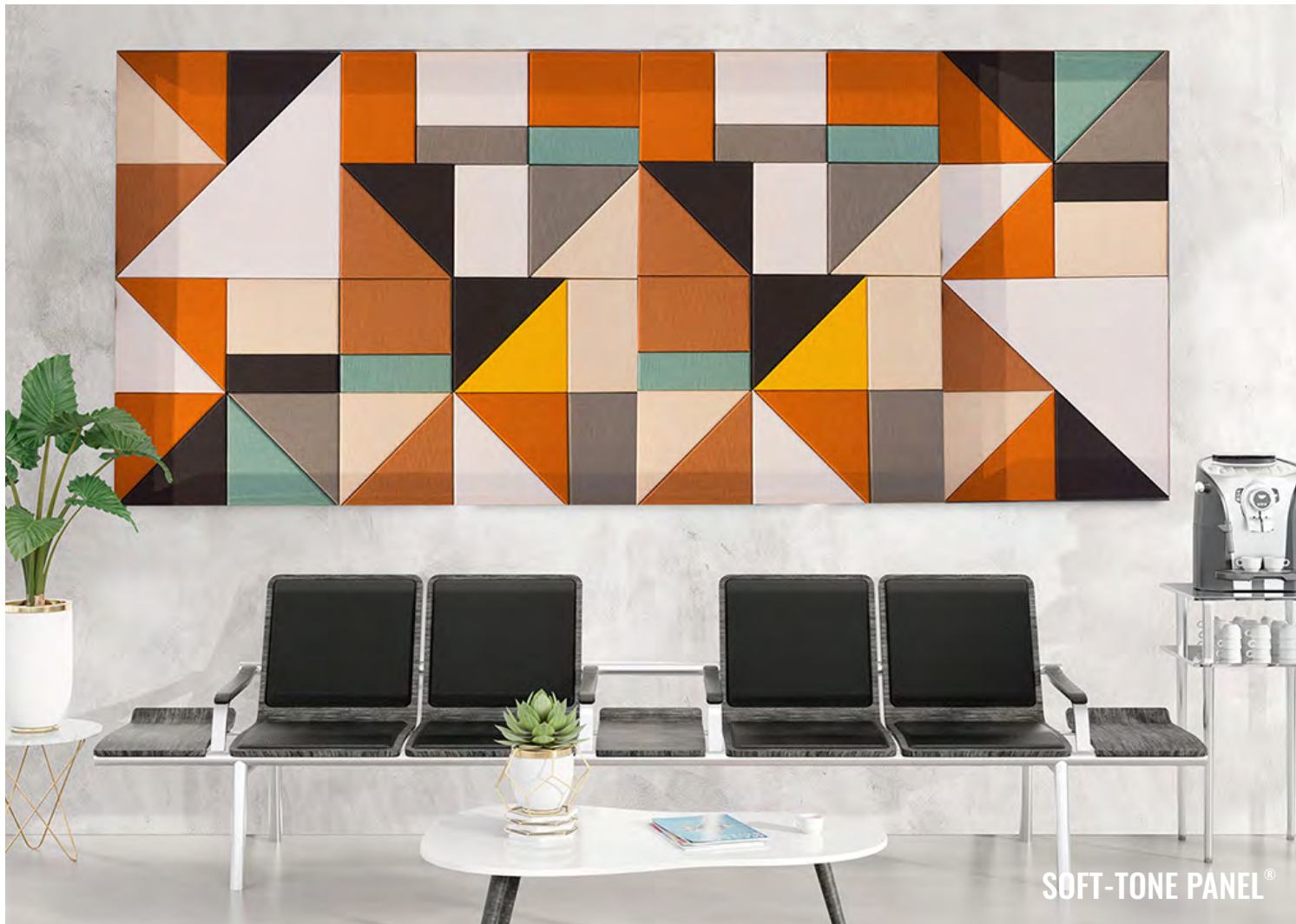
OCEANSIDE ACOUSTIC ECO-PANEL KIT



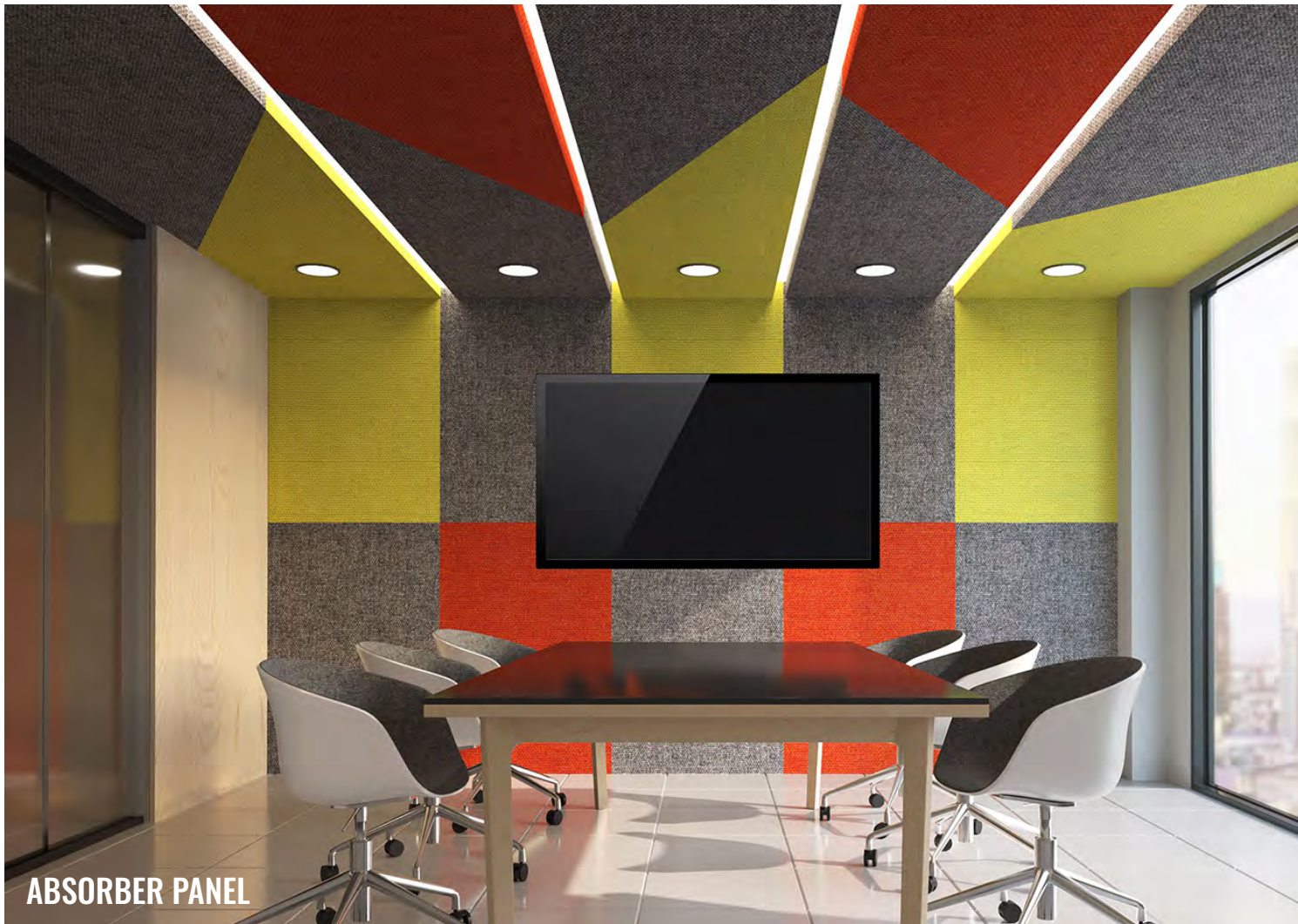
RADIUS



POLYESTER CORE



SOFT-TONE PANEL®



ABSORBER PANEL



BARREL & PYRAMID DIFFUSERS



TACKBOARDS



SOUND SUCKER®
METAL WALL PANEL



ECO-SONIC® PANEL





PRINTED ART





SUSPENDED CEILING CLOUDS



SINGLE CORE HANGING BAFFLE



STANDARD



DUAL CORE HANGING BAFFLE

SUSTAINABILITY




LEED OBJECTIVES

LAMVIN, Inc. strives to be a leader in not only our own environmental efforts and contributions, but also to help our clients achieve the same objectives. We help our customers attain the LEED points and credits required for sustainable green buildings pioneered by the US Green Building Council (USGBC). Not only do our products help our customers achieve LEED objectives, but our manufacturing processes and materials go beyond the minimal requirements established by the USGBC.





LAMVIN'S ENVIRONMENTAL INITIATIVES:

-  Adhesives used in our manufacturing process have zero VOC's emitting no harmful chemicals into the air.
-  Our large format CAD driven waterjet machine used for custom and large production jobs allows for perfect accuracy, highest material yield and virtually no production errors, once again, diverting unnecessary waste from our landfills.
-  Our 57,000 sf manufacturing plant has been completely retrofitted with energy saving lighting with motion sensors.
-  Our computer driven product manufacturing process optimizes all jobs for minimal waste, diverting that waste from our landfills.



www.lamvin.com

 A CATALYST ACOUSTICS GROUP COMPANY



LAMVIN